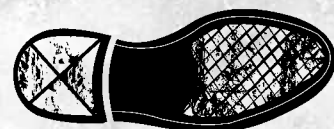
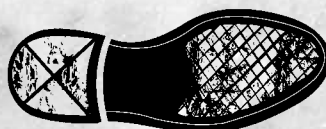
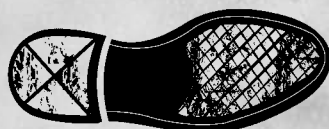
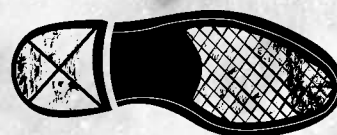
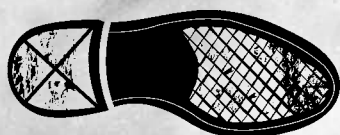
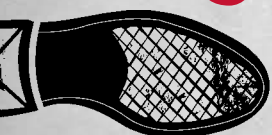


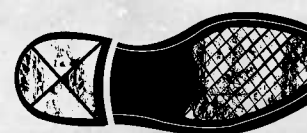
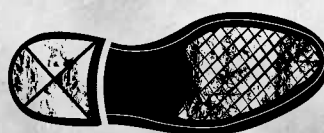
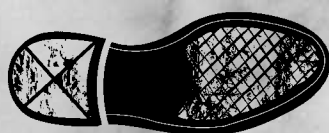
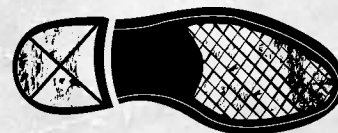
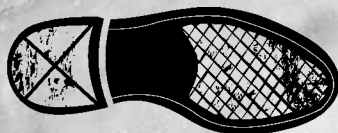
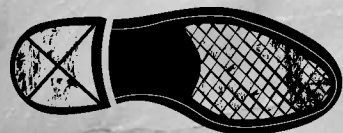
Clearinghouse REVIEW

November–December 2009
Volume 43, Numbers 7–8

Journal of
Poverty Law
and Policy



THE
SUPREME COURT
CONTINUES ITS
MARCH TO THE
RIGHT



Child Custody Jurisdiction and Domestic-Violence Survivors

Foreclosure Mediation

Universal Voluntary Retirement Accounts

Ethical Questions Involving Unrepresented Litigants

The *Olmstead* Decision at Ten



SHRIVER
CENTER

Sargent Shriver National Center on Poverty Law

Clearinghouse REVIEW

Published by the
Sargent Shriver National Center on Poverty Law
50 E. Washington St. Suite 500, Chicago, IL 60602
312.263.3830, Fax 312.263.3846
www.povertylaw.org

PRESIDENT: John Bouman

EDITORIAL

EDITOR AND VICE PRESIDENT OF COMMUNICATION PROGRAMS:

Ilze Sprudz Hirsh

ASSOCIATE EDITOR: Edwin P. Abaya

SENIOR ATTORNEY-LEGAL EDITOR: Marcia Henry

VOLUNTEER ATTORNEY: Kathleen Donahue McNally

WEB CONTENT EDITOR: Michelle Nicolet

STAFF ATTORNEY-LEGAL EDITOR: Catherine Dorn Schreiber

STAFF ATTORNEY-LEGAL EDITOR: Jason T. Vail

AMERICORPS VISTA: Linda Jordan

ADVOCACY

DIRECTOR OF ADVOCACY: John Bouman

SUPERVISING ATTORNEY, COMMUNITY INVESTMENT UNIT:

Karen K. Harris

STAFF ATTORNEY: Jennifer L. Hrycyna

STAFF ATTORNEY: Andrea Kovach

SENIOR ATTORNEY: Dan Lesser

DIRECTOR, WOMEN'S LAW AND POLICY PROJECT: Wendy Pollack

SENIOR ATTORNEY: Margaret Stapleton

STAFF ATTORNEY: Marie Claire Tran-Leung

STAFF ATTORNEY: Samantha M. Tuttle

SENIOR ATTORNEY: Katherine E. Walz

DIRECTOR OF HOUSING LITIGATION: William Wilen

AMERICORPS VISTA: Apreye Baralaye, Elizabeth Frantz,

Lizzie Grennan, Hannah Weinberger Divack

ADMINISTRATION

VICE PRESIDENT OF OPERATIONS: Elizabeth C. Ring

VICE PRESIDENT OF EXTERNAL AFFAIRS: Molly Bartlett

RECEPTIONIST/ADMINISTRATIVE ASSISTANT: Nancy Carey

ADMINISTRATIVE ASSOCIATE: Murtle Mae English

COMPUTER SYSTEM ADMINISTRATOR: Tim Fluhr

ACCOUNTANT: Nazim Khan

FINANCIAL MANAGER: Emmett Murphy

DEVELOPMENT SPECIALIST: Juan Francisco Orozco

PUBLIC AFFAIRS SPECIALIST: Valerie Reynolds

FOUNDATION RELATIONS OFFICER: Brendan Short

AMERICORPS VISTA: Lissa Domoracki

BOARD OF DIRECTORS

CHAIR: Janice E. Rodgers, Chicago, IL

VICE CHAIR: Sunny Fischer, Chicago, IL

SECRETARY: Divida Gude, Atlanta, GA

TREASURER: C. Steven Tomashefsky, Chicago, IL

William J. Beck, Chicago, IL

Nicholas E. Chimicles, Haverford, PA

Frederick H. Cohen, Chicago, IL

Stuart Cohen, Washington, DC

Sandra Cuneo, Los Angeles, CA

Gregory R. Dallaire, Seattle, WA

Gill Deford, Mansfield, CT

Mickey Kantor, Washington, DC

Ethel Klein, New York, NY

Betty J. Musburger, Evanston, IL

Catherine L. Robb, Austin, TX

Jean Rudd, Chicago, IL

Joe Scantlebury, Washington, DC

Jill Schuker, Washington, DC

John C. Thurmond, Chicago, IL

Cyrus Vance Jr., New York, NY

Luis A. Wilmot, San Antonio, TX

SENIOR ADVISOR: William Josephson

EDITORIAL ADVISORY BOARD

Gill Deford, Mansfield, CT

Francisca Fajana, Boston, MA

Jane Perkins, Chapel Hill, NC

Theresa-Vay Smith, Oak Ridge, TN

Margaret Stapleton, Chicago, IL

Mona Tawatao, Sacramento, CA

About This Issue

Since 1993, CLEARINGHOUSE REVIEW has annually published (except in 1995) a review of U.S. Supreme Court decisions concerning access to the federal courts, and this year is no different. This year's article, "The Supreme Court's 2008-2009 Decisions on Court Access: The March to the Right Continues," was written by Gary F. Smith, Matthew Diller, Jane Perkins, and Gill Deford. The authors assert that the Court's decisions this Term implicating issues of access (including pleading requirements, deference, standards for preliminary injunctions, *stare decisis*, and postjudgment relief) demonstrate its now well-established tendency to favor the government and business over the individual and the environment.

The authors of the next article explain how the Uniform Child Custody Jurisdiction and Enforcement Act, a significant model act now adopted by most states, can be a helpful guide for advocates of domestic-violence survivors. When victims leave home to flee domestic violence, this law offers protection to the survivors and their children.

Looking ahead and for improved ways to help low-income people during the country's economic downturn, this issue also touches on other timely topics affecting low-income communities. Among others, the pros and cons of foreclosure mediations are examined by one advocate, and government-sponsored Universal Voluntary Retirement Accounts as one way to provide retirement security for workers who otherwise would have none are proposed by the Sargent Shriver National Center on Poverty Law's own experts.

For 2010, our editorial team has identified some high-priority topics but is very interested in what you would like to see discussed in the REVIEW. If you have any topics you would like to see covered in the REVIEW, please visit our Facebook page and click on the "Discussions" tab. Or fill out the comment form at www.povertylaw.org/reviewsurvey or send me an e-mail at ilzehirsh@povertylaw.org.

Health care reform clearly will affect low-income people. However, climate change and the policies surrounding federal climate-change legislation may not so clearly result in severe consequences for low-income populations. Advocates need to know about the consequences and be prepared to represent the interests of their low-income clients. As part of the Shriver Center's initiative to raise awareness about climate change and its impact on low-income people and their communities, the REVIEW plans to cover this topic. See The Shriver Brief's "Climate Change's Added Impact on Low-Income People and Communities," <http://bit.ly/2swvdY>. Let us know about your efforts to give low-income people a voice in the debate about handling climate change; we would like to share those in the REVIEW. Problems that are exacerbated or created by the economic downturn will also be analyzed, including strategies for racial equity and racial justice, affirmative advocacy, and a right to counsel in civil cases. Let us know what you think.

Ilze Sprudz Hirsh



Sargent Shriver National Center on Poverty Law

CLEARINGHOUSE REVIEW encourages the submission of articles from legal aid field staff and others. Send articles to Ilze Sprudz Hirsh, editor and vice president of communication programs, Sargent Shriver National Center on Poverty Law, 50 E. Washington St. Suite 500, Chicago, IL 60602; ilzehirsh@povertylaw.org.

The opinions expressed herein are those of the authors and should not be construed as representing the opinions or policy of the organizations which employ them or of the Shriver Center.

CLEARINGHOUSE REVIEW: JOURNAL OF POVERTY LAW AND POLICY is published six times a year, in February, April, June, August, October, and December by the Sargent Shriver National Center on Poverty Law, 50 E. Washington St. Suite 500, Chicago, IL 60602. Annual subscription price for hard copy and online access to REVIEW articles back to 1967: \$105 to advocates at Legal Services Corporation-funded programs, \$250 to nonprofit entities, \$400 to individuals, and \$500 to law libraries. ISSN 0009-868X.

Photographs and drawings that appear in CLEARINGHOUSE REVIEW are produced independently of articles and bear no relationship to cases or incidents discussed herein. Cover photo: royalty-free stock photography

Subscribe to CLEARINGHOUSE REVIEW

Annual subscription price covers

- six issues (hard copy) of CLEARINGHOUSE REVIEW and
- www.povertylaw.org access to current issues of CLEARINGHOUSE REVIEW and all issues from 1990

Annual prices (effective January 1, 2006):

- \$105—Legal Services Corporation–funded field programs (special discount)
- \$250—Nonprofit entities (including law school clinics)
- \$400—Individual private subscriber
- \$500—Law school libraries, law firm libraries, and other law libraries (price covers a site license)

Subscription Order Form

Name _____

Fill in applicable institution below

Nonprofit entity _____

Library or foundation* _____

Street address _____ Floor, suite, or unit _____

City _____ State _____ Zip _____

E-mail _____

Telephone _____ Fax _____

*For Internet Provider–based access, give your IP address range _____

Order

Number of subscriptions ordered _____

Total cost (see prices above) \$ _____

Payment

- My payment is enclosed.
*Make your check payable to **Sargent Shriver National Center on Poverty Law.***

- Charge my credit card: Visa or Mastercard.

Card No. _____ Expiration Date _____

Signature _____

We will mail you a receipt.

- Bill me.

Please mail or fax this form to:
Sargent Shriver National Center on Poverty Law
50 E. Washington St. Suite 500
Chicago, IL 60602
Fax 312.263.3846

CUT HERE